

## Potufolofola 'o e Māhina ní:

Hili ha'amou lau ha potufolofola, valivali 'a e 'ēlia 'oku fehoanaki mo e mata'ifika 'i he fakatātaá!

1 3 Nīfai 12:1–9, 16

3 3 Nīfai 13:6–8, 19–21

5 3 Nīfai 18:19–21, 24

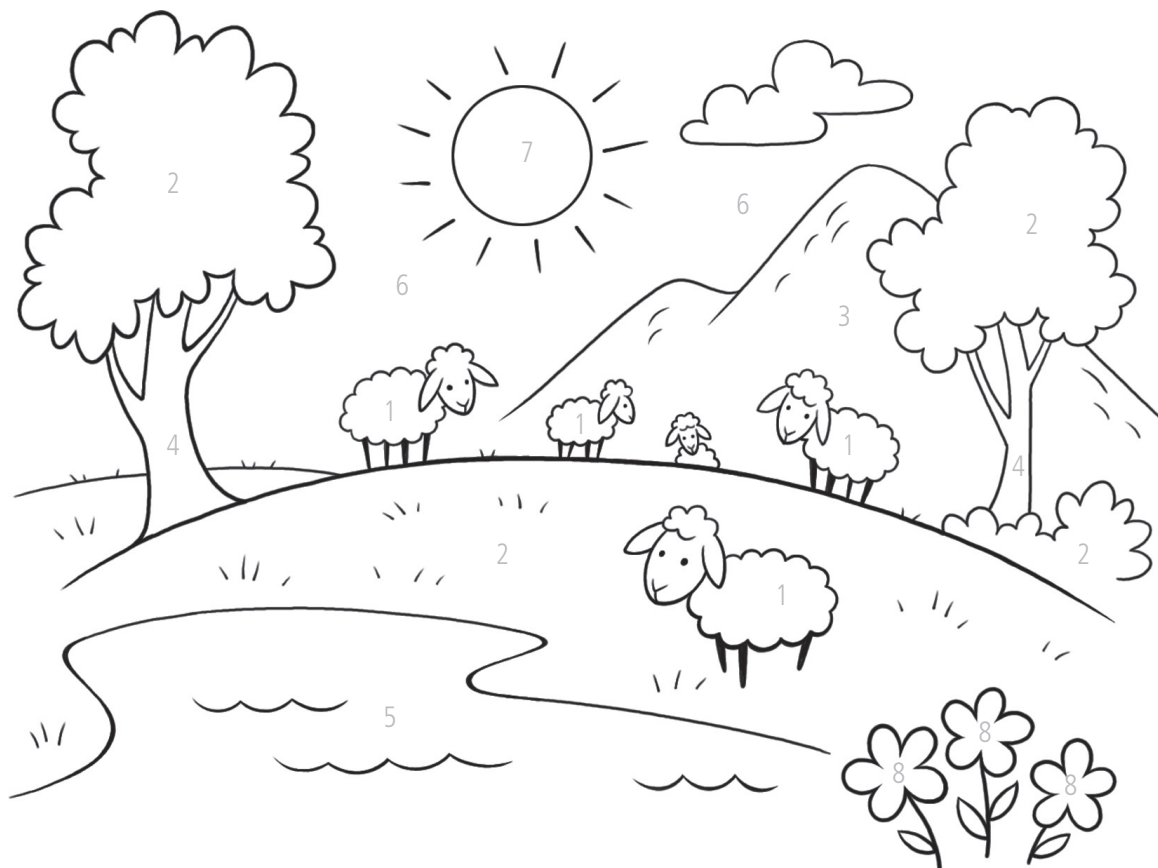
7 3 Nīfai 19:11–26

2 3 Nīfai 12:19–20, 44, 48

4 3 Nīfai 18:1–12

6 3 Nīfai 18:35–39

8 3 Nīfai 20:1, 29–31



TOOMATAU: TĀ FAKATĀTĀ E IARED BECKSTRAND; 1 LAU: TĀPUAKI E KALAI E FĀNAU 'A E KAU NĪFAI, FAI E TED HENNINGER



### Fanga Sipi Kehe

**K**o e taimi na'e akonaki ai 'a Sīsū 'i Selusalemá, na'á Ne fakahā ki he kakaí 'oku 'i ai mo 'Ene "fanga sipi kehe" na'á Ne fie ma'u ke ako'i (vakai, Sione 10:16). Na'á Ne 'uhinga ki he kau Nīfaí mo e kakai 'i he ngaahi fonua kehé. Hili 'Ene Toetu'ú, na'e 'a'ahi 'a Sīsū mo akonaki ki he kau Nīfaí. Te ke lava 'o laukonga lahi ange ki He'ene 'a'ahí 'i he peesi 76–78. Pea fekumi ki ha tukupā laukonga 'e taha 'i he makasini hono hokó! ■